



Na Hoa Holomoku of Hawaii Yacht Club
September 18, 2005 Club Races
SAILING INSTRUCTIONS

1. RULES

1.1 The races will be governed by the 'rules' as defined in *The Racing Rules of Sailing 2005-2008*.

2. CHANGES TO SAILING INSTRUCTIONS

2.1 Any change to the sailing instructions will be posted on a sheet next to the sign-in sheet and announced at a briefing to be held at 10:00 am on the day of the races.

3. RACE SCHEDULE

3.1 The scheduled time of the warning signal for the first race is 11:25 am.

3.2 The numbers of races scheduled in the series (excluding practice races) is four for each class.

3.3 The times for the warning signals for the first race of each class is given below. If the start of a class is delayed, or the race has to be restarted, then the starts of other classes scheduled after that class will be delayed by a similar amount.

<i>Class</i>	<i>Time of first race warning signal</i>
Sunfish	11:25 am
Walker Bay 10	11:30 am



3.4 Successive races of the day for each pair will start as soon as possible after the finish of the last boat of the previous pair (Sunfish and Walker Bay 10) of races.

3.5 The Race Committee will try to maintain the five minute separation between the start of the Sunfish and Walker Bay 10 classes: however, this is not guaranteed and the start of the Walker Bay 10's may be delayed. So, watch for the Warning flags.

4. CLASS FLAGS

4.1 Class flags will be:

<i>Class</i>	<i>Class Flag</i>
Sunfish	Yellow Flag with black Sunfish Class insignia
Walker Bay 10	Code Flag "O" (Red and Yellow diagonal halves)

5. RACING AREA

5.1 Attachment 1 shows the location of the racing area.

6. THE COURSES

6.1 The diagrams in Attachment 2 show the courses, including the approximate angles between legs, the order in which marks are to be passed, and the side on which each mark is to be left.

6.2 The course for each race will be displayed on a board on the stern of the committee boat at the time of the warning signal of the race.

6.3 The starting and finishing line shall be treated as an obstruction at all times while racing, except during a competitors starting sequence and while finishing. Passing through the line at other times during the race will result in disqualification.

7. MARKS

7.1 The starting and finishing mark will be an orange flag on a small cylindrical float.

7.2 Marks 1, 2 and 3 for will be orange cylindrical marks.

8. THE START

8.1 The starting line will be between a staff displaying the club burgee on the committee boat and the finishing mark.

8.2 Races will be started by using rule 26. For convenience, Rule 26 is as follows:

“Races shall be started by using the following signals. Times shall be taken from the visual signals; the absence of a sound signal shall be disregarded.

Signal	Flag and sound	Minutes before starting signal
Warning	Class flag; 1 sound	5
Preparatory	P, I, Z, Z with I, or black flag;; 1 sound	4
One-minute	Preparatory flag removed; 1 long sound	1
Starting	Class flag removed; 1 sound	0

The warning signal for each succeeding class shall be made with or after the starting signal of the preceding class.” See 3.5 above.

8.3 I, Z, Z with I, and black flags will not be used. Code flag P will be the preparatory signal.

8.4 Boats whose warning signal has not been made shall avoid the starting area.

9. THE FINISH

9.1 The finishing line will be between a staff displaying the club burgee on the committee boat and the finishing mark.

9.2 The courses can be shortened by the Race Committee on the committee boat by displaying code flag S with two sounds. The race will then finish between the nearby mark and the staff code flag S on the committee boat. Boats should pass through the line from the direction of the last mark.

10. PROTESTS, PENALTIES AND REQUESTS FOR REDRESS

- 10.1** This changes Racing Rules 60 through 71.4. There is no protest procedure. All competitors are expected to follow the racing rules of sailing and have fun. If an infringement occurs, the infringing boat should take a 720° penalty. If, in the opinion of the race committee, any competitor persistently neglects the rules they may be barred from racing in the series.

11. SCORING

- 11.1** The Low Point scoring system of Appendix A will apply. (This means that the boat scores the same number of points as their finishing position, and the lowest total wins).
- 11.2** The number of races used in calculating a boat's series score is as follows:
- 11.2.1** When fewer than 4 races have been completed, a boat's series score will be the total of her race scores.
- 11.2.2** When from 4 to 7 races have been completed, a boat's series score will be the total of her race scores excluding her worst score.

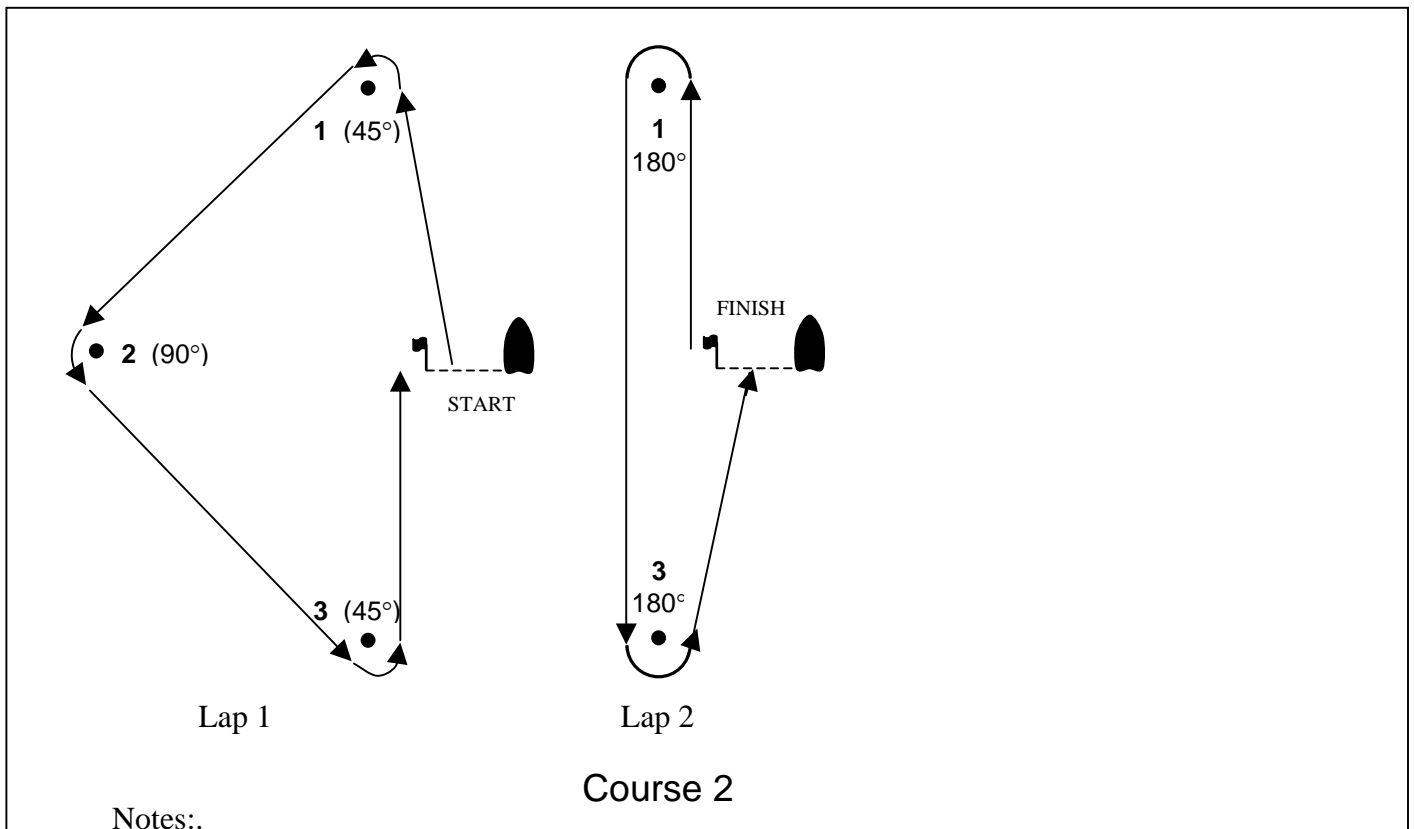
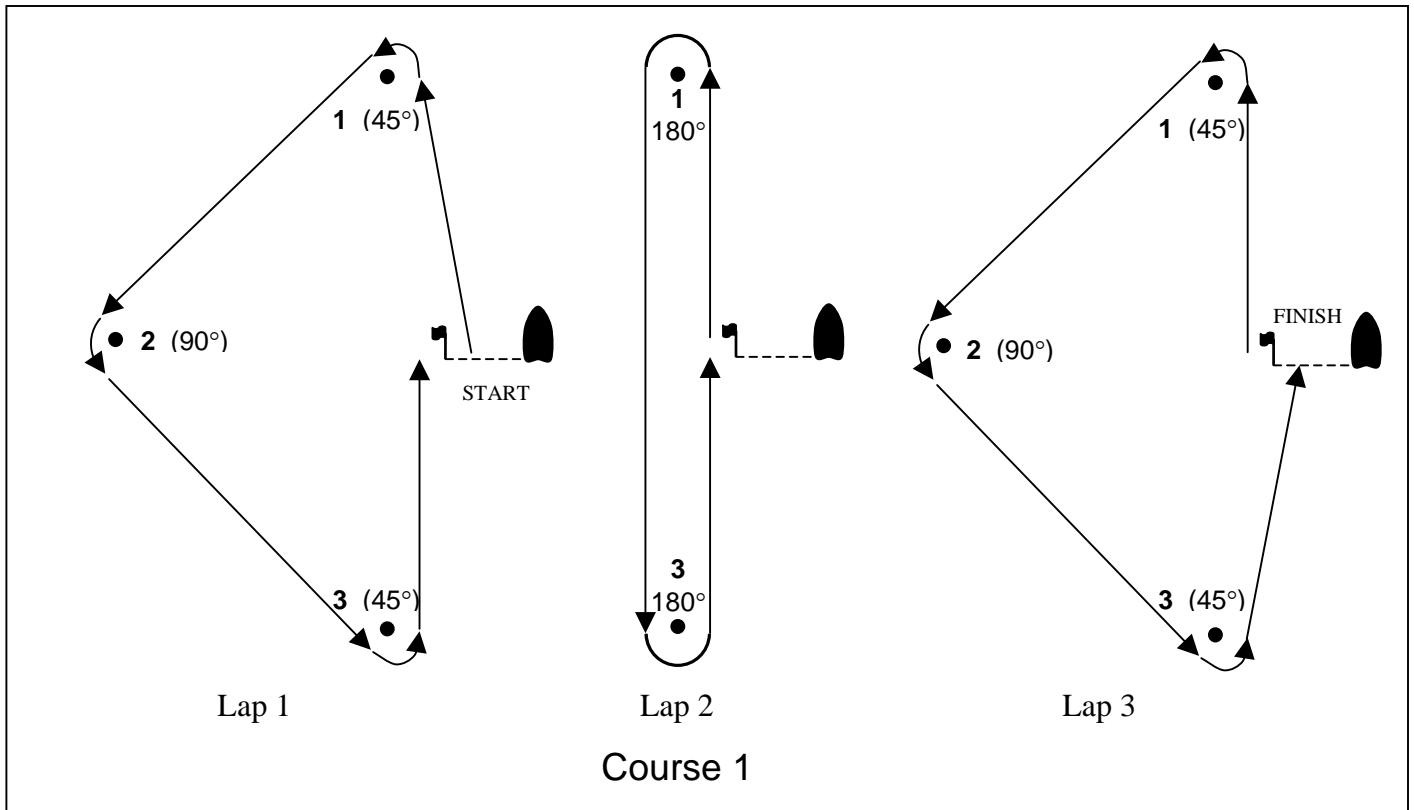
12. SAFETY REGULATIONS

- 12.1** Boats must sign in before 10:00 am on the day of the race, and sign out after they have finished racing. The sign-in sheet will be located in the club tent on Hilo Bay beach.
- 12.2** A boat that retires from a race shall notify the race committee as soon as possible.

13. DISCLAIMER OF LIABILITY

- 13.1** Competitors participate in the races entirely at their own risk. See *The Racing Rules of Sailing* rule 4, Decision to Race. The organizing authority will not accept any liability for material damage or personal injury or death sustained in conjunction with or prior to, during, or after the regatta.

Attachment 2. Course Illustrations



1. The first mark will be approximately to windward of the starting line.
2. The starting and finishing line shall be treated as an obstruction at all times while racing, except during a competitors starting sequence and while finishing. Passing through the line at other times during the race will result in disqualification.
3. Competitors may pass on either side of the starting and finishing line at the end of laps 1 and 2 or on the downwind leg in lap 2.
4. The starting and finishing mark will be an orange flag on a small cylindrical float.
5. All marks except the starting and finishing mark will be orange cylinders.